

7D5N Immersion in CENTRAL JAPAN

身临

日本中部

Alps + Goshu Village
阿尔卑斯山+合掌村

Nagoya | Gifu | Nagano | Ishikawa | Toyama
名古屋 | 岐阜 | 长野 | 石川 | 富山

Tateyama Korube Alpine Route
立山黑部阿尔卑斯山脉路线



By The Signature Tours 由卓越旅程团队 Travel Designer Team 给您的游玩宝典



Dear Valued Guest,

Welcome to the Central Japan, a unique experience where nature and culture meet in perfect harmony. Our carefully designed itinerary will take you to the Seto River Shirakabe Warehouse Street, where you will enjoy the tranquility and vibrancy of thousands of colorful carp swimming along the 500-meter-long street. You will also experience the Tateyama Kurobe Alps, where you will ride six different modes of transportation across a 20-meter-high snow wall, experiencing the perfect combination of natural wonders and technology.

In addition, we have specially arranged a visit to the World Heritage Site of Shirakawa-go Hoppo Village, where the unique thatched-roof architecture and quiet countryside atmosphere seem to transport you to a time tunnel, recalling the charm of traditional Japanese life. Afterwards, you will stroll through the old streets of Hida Takayama, admiring traditional handicrafts and historical features, and savoring the authentic local culture and flavor.

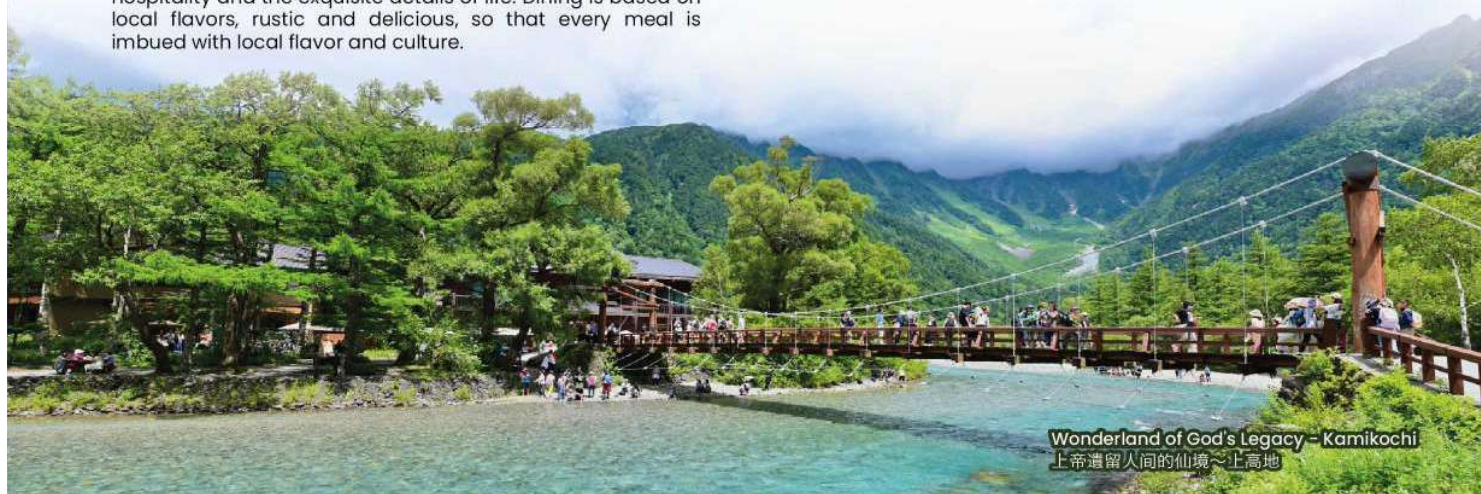
We have selected a number of traditional Japanese hotels in the countryside for this trip. Although the rooms are relatively compact, they offer a true experience of authentic Japanese hospitality and the exquisite details of life. Dining is based on local flavors, rustic and delicious, so that every meal is imbued with local flavor and culture.

亲爱的旅客,

欢迎来到日本中部之旅，这是一场自然与文化完美交融的独特体验。我们精心设计的行程，将带您走进濑户川白壁仓库街，欣赏500米长的街道沿岸，数千条色彩斑斓的鲤鱼悠游其中，静谧而充满生机。您还将亲历立山黑部阿尔卑斯山脉，乘坐6种不同的交通工具穿越高达20米的雪墙，感受自然奇观与技术的完美结合。

除此之外，我们特别安排了世界遗产白川乡合掌村的探访，独特的茅草屋建筑和静谧的乡村氛围，仿佛让您置身于时光长廊中，回顾日本传统生活的魅力。随后，您将在飞弹高山的古街漫步，欣赏传统手工艺品和历史风貌，品味纯正的地方文化与风情。

我们为此次旅途精选了多家乡村地区的日式传统酒店，虽房间相对紧凑，但却能让您真正体验纯正的日本待客之道，体会生活中的精致细节。餐饮则以当地风味为主，质朴而美味，让每一餐都蕴含着地方的味道与文化。



Map 地图





7D 5N

IMMERSION IN CENTRAL JAPAN

NAGOYA | GIFU | NAGANO | ISHIKAWA | TOYAMA

DAY 01 KUL ✈️ SINGAPORE

(In-Flight)

DAY 02 INCHEON ✈️ NAGOYA - (150KM) - GIFU

(LL/LD)

- **Shirakawago Gokayama** - UNESCO World Heritage site, it is famous for its unique gassho-built houses.
- **Hida Takayama Sanmachi Old Town** - With a history of over 400 years, visitors can feel the strong atmosphere of the Edo period.
- **Seto River and Shirakabe Dozo Street**: The Seto River, with the stone walls of Shirakabe Dozo and temples as a backdrop, is full of more than 1,000 koi carp.

DAY 03 GIFU - (116KM) - ISHIKAWA - (66KM) - TOYAMA

(HB/LL/LD)

- **Kanrokuen Garden**: One of the three most famous gardens in Japan, known for its elaborate layout and the beauty of the four seasons.
- In **Kanazawa**, a city where culture and cuisine coexist, savor the exquisite and luxurious golden Ice-cream and experience the perfect combination of Kanazawa's centuries-old gold leaf craftsmanship and culinary culture.
- **Tonami Tulip Gallery**: It's a wonderful facility where you can experience the secrets buried in the soil and learn about the history and culture of the people who love tulips while strolling around.

*If Tulip Gallery closed:

- **Shiminato Kittokito Market**: Toyama Bay, famous for its abundance of seafood, is even known as a 'natural fishbowl' and offers a large selection of seafood freshly caught in the Shiminato Fishing Harbour.

DAY 04 TOYAMA - (70KM) - NAGANO

(HB/LL/LD)

- **Tateyama Kurobe Alpine Route (mid-April-June)**: This is a famous sightseeing route through the Northern Alps. Visitors can experience the spectacular natural scenery from Tateyama Station to the Kurobe Dam, passing snow walls, valleys and lakes.

DAY 05 NAGANO - (35KM) - GIFU - (66KM) - NAGOYA

(HB/LL)

- Matsumoto Castle
- Kamikochi (Kappa Bridge)
- Gujo Hachiman (food replica workshop)
- Nagoya Ramen Street

DAY 06 NAGANO - (35KM) - MIE - (30KM) - NAGOYA

(HB/LD)

- Nagashima Factory Outlet
- Nabana no Sato (flower illumination): The vast land covering 300,000m2 is even more beautiful in summer with purple sunflowers and irises.

DAY 07 NAGOYA ✈️ SINGAPORE ✈️ KUL

Meal Codes:

*MOB=Meals on Board/HB=Hotel Breakfast/LL=Local Lunch/LD=Local Dinner/

Exclusive Arrangement

Disclaimer:

Sequences of itinerary are subject to local arrangement. Itineraries, meals, hotels and transportation are subject to change without prior notice.





7天 5晚

身临日本中部

名古屋 | 岐阜 | 长野 | 石川 | 富山

第01天 吉隆坡 ✈️ 新加坡

(飞行中)

第02天 新加坡 ✈️ 名古屋

- 富山 (150KM) - 岐阜

(道地午餐/道地晚餐)

- 白川乡合掌村：联合国教科文组织认定的世界遗产，以其独特的合掌造房屋而闻名。含票进入村内真宗大谷派以合掌造的风格建造的一座寺庙-明善寺。
- 飞弹高山三町古街：有着400年以上的历史，游客可以感受浓厚的江户时代氛围。
- 濑户川与白壁土藏街：濑户川以白壁土藏与寺院的石墙为背景，千余匹锦鲤悠游其中。

第03天 岐阜 - 石川

- 富山 (66KM) - 名古屋

(酒店早餐/当地午餐/当地晚餐)

- 兼六园：日本三大名园之一，以其精心设计的布局和四季分明的美景而著称。
- 在金泽这座文化与美食并存的城市，品尝到精致奢华的黄金冰淇淋，感受金泽传承百年的金箔工艺与美食文化的完美结合。
- 郁金香四季彩馆：是一处带点奇妙的设施，能够一边逛，一边体验埋在土壤里的所拥有的秘密，了解喜爱郁金香之人的历史和文化等。

*花期以外或休馆

- 新湊Kittokito市场：以拥有丰富海鲜闻名的富山湾，甚至有「天然鱼缸」的称号，大量提供在新湊渔港刚刚捕获的海鲜。

第04天 富山 - 长野

(酒店早餐/当地午餐/当地晚餐)



- 立山黑部阿尔卑斯山脉路线(4月中旬-6月)：该路线是著名的观光线路，贯穿北阿尔卑斯山脉。游客可以体验从立山站到黑部水坝的壮观自然风光，途经雪墙、山谷和湖泊。

第05天 长野 - 岐阜

- 名古屋 (100KM)

(酒店早餐/当地午餐)



- 松本城
- 上高地 (河童桥)
- 郡上八幡 (食品仿制作坊)
- 名古屋拉面街

第06天 名古屋 - 三重

- 名古屋 (30KM)

(酒店早餐/当地晚餐)

- 长岛奥特莱斯购物中心
- 名花之里：占地面积达30万㎡的广阔的土地上，夏季更有紫阳花和花菖蒲，非常漂亮。

第07天 名古屋 ✈️ 新加坡 ✈️ 吉隆坡

免责声明:

行程次序以当地旅行社安排为准。行程，膳食，住宿，交通等可能会因不可抗力因素而更动，恕不另行通知。



Golden Ice Cream
金箔冰淇淋



Sarubobo
猴宝宝

Must See Attractions

经典地标 深入探索

Carefree
悠游

Enjoy relaxation, truly appreciate the world
享受放松 感慨世界美好

Capture
收获

The color & essence of each journey
旅途中的色彩和精髓

Cozy
温馨

Vibes to create joyful moment together
共创愉悦片刻

白川乡合掌村

Shirakawago Gokayama

A paradise-like atmosphere, away from the hustle and bustle. As Shirakawa-go is located in the mountains, the village maintains relative tranquillity and a feeling of a paradise away from the fast pace of modern cities.

世外桃源般的氛围，远离喧嚣。由于白川乡位于山区，村庄保持了相对的宁静和远离现代城市的快节奏，给人一种世外桃源的感觉。



立山黑部阿尔卑斯山脉路线

Tateyama Kurobe Alpine Route

The Tateyama Kurobe Alpine Route combines magnificent natural landscapes with the wonders of human engineering. From snow walls to dams, from mountains to lakes, this route offers a rich and varied range of attractions, making it an all-encompassing alpine experience.

立山黑部阿尔卑斯山脉路线结合了壮丽的自然景观和人类工程奇迹，从雪墙到水坝、从高山到湖泊，这条路线提供了丰富多样的景点，是一次全方位的高山体验之旅。



金泽兼六园

Kenroku-en

The name "Kenrokuen" represents the "six elements," showcasing the six remarkable characteristics that make the garden awe-inspiring: spaciousness, tranquility, artifice, antiquity, ingenious water design, and breathtaking scenic beauty.

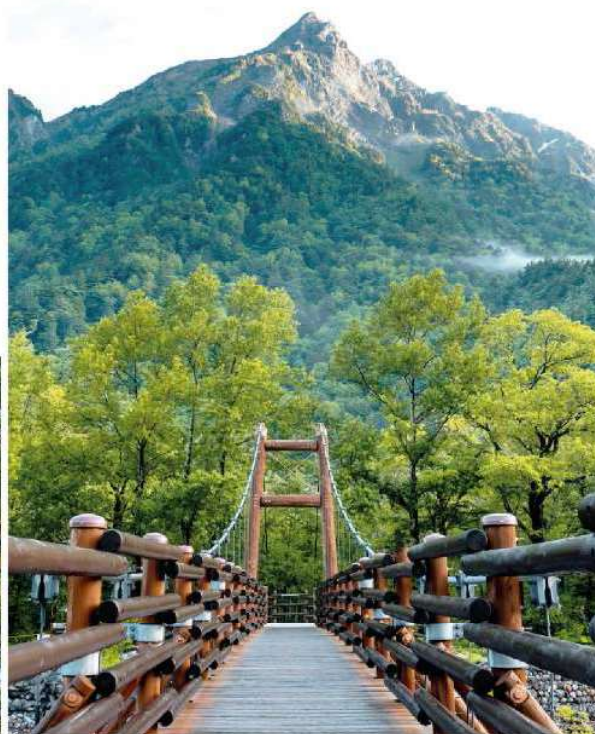
兼六园这个名字的意思是代表了“六个要素”，表现出花园令人叹为观止的六大美属性：宽敞，宁静，人造，古朴，巧妙的水源设计和绝美壮丽的景色。



上帝遺留人間的仙境～上高地 Wonderland of God's Legacy – Kamikochi

Surrounded by the Northern Alps, Kamikochi is home to magnificent mountain scenery and crystal-clear lakes, especially Taisho Pond and Kappa Bridge, which attract numerous photographers and nature lovers.

上高地被北阿尔卑斯山脉环绕，拥有壮丽的山景和清澈的湖泊，特别是大正池和河童桥，吸引着无数摄影爱好者和自然爱好者。



名花之里 Nabana no Sato

It is one of the largest flower theme parks in Japan, and the annual Lantern Festival, held from October to May, is also one of the largest in Japan and a popular event that attracts visitors from all over the country. The theme of the illuminations changes every year, and you can enjoy different decorations and performances every year.

是日本最大的花卉主题公园之一，每年10月至5月举行的灯饰活动也是日本规模最大的活动之一，是吸引日本各地游客的热门活动。每年的灯饰主题都会发生变化，每年都可以欣赏到不同的装饰和表演。



瀬戸川和白壁土蔵街 Seto River and Shirakabe Dozo Street

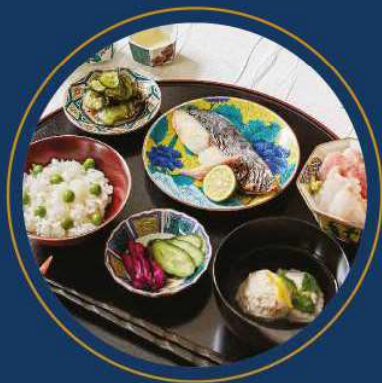
It's like a quiet little Kyoto, with colourful Koi carp swimming around!

宛如恬靜的小京都 色彩繽紛的錦鯉悠遊其間！



Taste Indulge

味蕾



Rustic Japanese Set
日本乡村风味



Whole Crab Delicacy
全只螃蟹美味



日式涮涮锅



Classic Tateyama Unagi Rice
经典立山鳗鱼饭



Grilled Fish Cuisine
香烤鱼套餐

Remarks/备注:

All pictures in brochure are for illustration purpose only / 行程上的图片仅供参考

| Days 天数 | BREAKFAST 早餐 | LUNCH 午餐 | DINNER 晚餐 |
|---------|-------------------------|--|--|
| 1 | - | - | - |
| 2 | 机上用餐 Meals on Board | 日本乡村风味 Rustic Japanese Set | 酒店自助餐 / 会席料理 Hotel buffet / Kaiseki Set |
| 3 | 酒店早餐 Hotel Breakfast | 全只螃蟹美味 * Whole Crab Delicacy * | 日式涮涮锅 Japanese Shabu-Shabu |
| 4 | 酒店早餐 Hotel Breakfast | 经典立山鳗鱼饭 Classic Tateyama Unagi Rice | 酒店自助餐 / 会席料理 Hotel buffet / Kaiseki Set |
| 5 | 酒店早餐 Hotel Breakfast | 香烤鱼套餐 Grilled Fish Cuisine | 自理 Own Arrangement |
| 6 | 酒店早餐 Hotel Breakfast | 自理 Own Arrangement | 烧烤肉无限畅享 Japanese BBQ buffet |
| 7 | 酒店早餐 Hotel Breakfast | 机上用餐 Meal On Board | - |

* If it is not the crab season, the seafood meal will be changed to the same value.

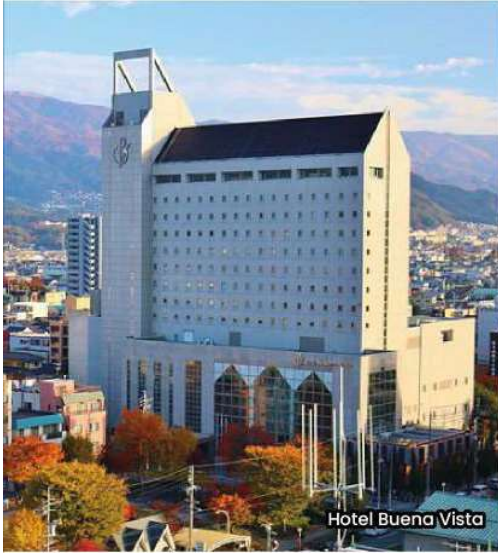
* 如果不是螃蟹的季节，将改为相同价值的海鲜餐。



Accommodation 旅宿



Embark on a complete journey at 4-star & 5-star hotel, offering a quality & comfortable stay.
全程安排四+五星级酒店, 让您在整个旅程中享受到有质量且舒适的住宿环境。



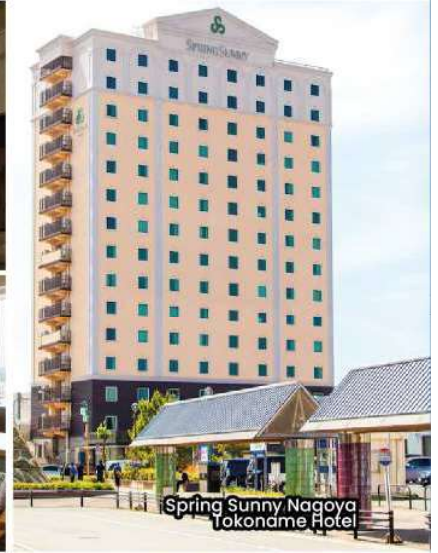
Hotel Buena Vista



Toyama Excel Tokyu

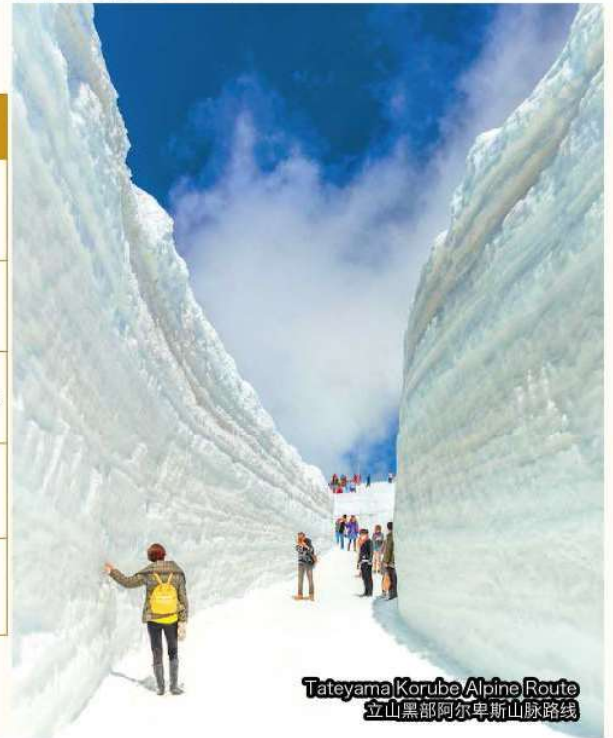


Takayama Green Hotel



Spring Sunny Nagoya
Tokoname Hotel

| STAY 留宿 | LOCATION 地点 | HOTEL 酒店 | RATED 等级 | REMARKS 备注 |
|---------|-------------|---|----------|---|
| 1 Night | Gifu | Takayama Green Hotel or similar | ★★★★★ | Located in the heart of Hida Takayama and features a natural onsen overlooking a Japanese garden. |
| 1 Night | Toyama | Toyama Excel Tokyu or similar | ★★★★★ | - |
| 1 Night | Nagano | Hotel Buena Vista or similar | ★★★★★ | It is in the heart of the city. |
| 1 Night | Mie | Nagoya Tokyu Hotel or similar | ★★★★★ | - |
| 1 Night | Nagano | Spring Sunny Nagoya Tokoname or similar | ★★★★★ | Good location, about 10 minutes to Chubu International Airport |



Tateyama Korube Alpine Route
立山黑部阿尔卑斯山脉路线

THE SIGNATURE
TOURS

Travel Partner:

旅者之家
TRAVELERS HUB

TRAVELERS HUB TOURS SDN BHD

(896493-M) TDC No - KPL/LN: 6250

2-3-3A, Kompleks Kantonmen Prima,
No: 698, Batu 4 Jalan Ipoh, 51200 Kuala Lumpur, Malaysia.
Tel: +6016-3919333 | +603-27326615 | Fax: +603-27326619
Web: www.travelershut.com.my
Email: web@travelershut.com.my