

# THE SIGNATURE TOURS

旅者之家

TRAVELERS HUB

7D  
6N

## HARBIN + MOHE

HARBIN | VOLGA MANOR | MOHE | BEIJI VILLAGE

### 听风抚雪：哈尔滨 + 漠河

哈尔滨 | 伏尔加庄园 | 漠河 | 北极村



NO OPTIONAL TOUR, NO SHOPPING STOP, NO SELLING IN COACH



Ice & Snow World, Harbin  
冰雪大世界, 哈尔滨

ASIA

Tour Code: 7SCHRB

# S-Class Journey, Signature Memories



## 全心服务 难忘体验

The Signature Team embraces your journey with unwavering authenticity, methodically crafting every nuance. Our service stems from the core, characterized by a client-first professionalism, providing wholehearted and adept planning.

卓越旅程团队满怀真诚，为您的旅程精心雕琢每个细节。我们的服务源自核心，以客户至上的专业精神为特征，提供全心全意和熟练的规划。



### Professional Team

#### 专业旅游团队

Our people are certified travel professionals who have over years of experience. Every staff undergoes extensive customer service and quality assurance training.

我们的团队是经过认证的旅游专业人员，拥有超过多年的经验。每位员工都接受了广泛的客户服务和质量保证培训。



### Exclusive & Meticulous Route Planning

#### 独家精心策划

Our Exclusive & Meticulous Route Planning ensures every journey is tailored to your dreams and designed with meticulous care. It may provide you with an unforgettable journey!

带您一起用以前所未有的方式来探索世界。我们会提供独家细致的路线规划，确保每一次旅程都根据您的梦想专门定制，让您拥有难以忘怀的旅程体验！



### Accommodation

#### 住宿

We have always embraced the concept of 'home away from home' when selecting hotels. We often go to great lengths to meticulously assess factors such as room types, geographical locations, and even the views available from within the rooms, all to ensure that we provide you with an accommodation experience that meets the standards. Our aim is to make your journey feel as comfortable as being at home. Typically, our first choice is 4-star and 5-star hotels, as they often meet our expectations for good quality accommodation.

我们一直秉承着宾至如归的理念来挑选酒店。我们经常以酒店的房型、地理位置，甚至房内可欣赏到的景色来尽心筛选，以确保为您提供最符合标准的住宿体验，让您在旅途中也能感受到如同在家一般的舒适。通常4星和5星级酒店都是我们的首选，因为它们往往能达到我们对好质量住宿的要求。



Ice & Snow World, Harbin  
冰雪世界, 哈尔滨



7D 6N

# HARBIN + MOHE

HARBIN | VOLGA MANOR | MOHE | BEIJI VILLAGE

## DAY 01 KUL → HARBIN

(MOB/SP)

- Arrive in Harbin, the political, economic and cultural center of northern Northeast China, known as the Pearl of the Eurasian Continental Bridge.
- **Winter Clothing mall** opportunity to further equip yourself with additional cold weather gear.

## DAY 02 HARBIN

(HB/LL/RC)

- Volga Manor is a Russian-themed national 4A-level cultural and tourist attraction. The Russian European-style castle in the park and the reconstruction of the old Harbin buildings are merged into one, replicating the Russian classics. In the **Three Bears Paradise**, you can make your own **Russian nesting dolls**. Experience the thrilling and exciting castle snow circle, enjoy the fun brought by snow and ice!

## DAY 03 HARBIN → MOHE (1 HOURS 55 MINS)

(HB/LL/LD)

- Take a domestic flight to Mohe – which looks like a bright pearl set in the northernmost part of China's map.
- **Palm Court** became a tourist attraction after it survived a massive forest fire in 1987 that destroyed more than 100 hectares of forest trees in Daxinganling.
- **Polaris Plaza** consists of more than one hundred steps and it's the highest point in Mohe, overlooking the panoramic view of the whole Mohe county.

## DAY 04 MOHE – 110KM – THE ARCTIC CHRISTMAS VILLAGE – 22KM – BEIJI VILLAGE

(HB/LL/LD)

- **Ewenke Reindeer Park** get a close-up with the reindeer, feed them and take pictures.
- **Christmas village** in Mohe is located at the northernmost frontier of China, with Santa Claus House, Spruce Christmas Tree, Christmas Square, Christmas Post Office.
- **Mohe Ice and Snow Park (included ice car, ice sledge, ice hockey)** In addition, there is also an ice sculpture exhibition, displaying a variety of exquisite ice sculpture artwork, enjoy the Ice Feast!
- **Beiji Village (buggy car ride included)** it is the northernmost riverine village and town in mainland China, and a glimpse of the Arctic can be seen from this point.

※Mohe Beiji Village – located at 53 degrees north latitude, in the weak aurora zone, is the best place in China to view the Northern Lights. However, observing the aurora is extremely demanding in terms of weather conditions, and it is precisely because there is no specific pattern to the appearance of the aurora that this mysterious phenomenon is all the more mesmerizing.

### Remarks:

\*MOB=Meals on Board/HB=Hotel Breakfast/LL=Local Lunch/LD=Local Dinner  
BB=Boxed Breakfast/SP=Supper/RC=Russia Cuisine/KBL=Korean BBQ Lunch  
Farewell Dinner

Exclusive Arrangement

## DAY 05 BEIJI VILLAGE – 97KM – MOHE MOHE → HARBIN

(HB/LL/LD)

- Today is the start of "Journey to the North".
- **Beiji Village Monument** – A landmark in Mohe, that is the northernmost part in the land of God.
- **The northernmost post office (included one post card)** is not only an important institution providing postal services to residents, but also attracts many tourists to experience sending postcards in the northernmost part of China.
- View the **northernmost sentry post**, a military heavy ground. Respect for the hard-working border soldiers on the front line should be from afar.
- **China's northernmost family** it is a typical wood-carved flute hut, sitting in the north and facing the south, which is the north of the north, is the Beiji Village of a gold standard it.
- **Beiji Sha Zhou** – a three-pronged steel tower with the latitude and longitude of the area clearly labeled. The Chinese North Pole symbol is distinctively made and is half of the three characters for north, arranged at a 120-degree angle scattering from the center, so that it is the character for north from any angle.
- Experience **splashing water on ice** when you are in Beiji Village
- Take a domestic flight back to Harbin.

## DAY 06 HARBIN

(HB/KBL/FD)

- **Sofia Square** is the most perfectly preserved typical Byzantine building in China.
- Walking down **Zhongyang Avenue**, shopping and **eating Madier popsicles**, at 20°C below zero is the best way to experience the Zhongyang avenue
- Century-old historical relics **Zhongdongtie Road Bridge**, the most important landmark in Harbin.
- **Harbin Stalin Park** is an open landscape park on the banks of the Songhua River, where the famous **Harbin People Flood Control Success Memorial Tower** is located.
- **Chinese Baroque Street** is just like the name of this street, is a street where its buildings are an integration of baroque architectural and Chinese quads.
- **Ice & Snow World** is one of the largest ice and snow theme parks in the world. It is known for its amazing giant ice and snow sculptures. At night, the colourful lights illuminate the whole park, adding a mysterious and romantic atmosphere to these ice and snow sculptures. Besides the beauty of the ice and snow sculptures, interesting cultural activities and winter sports are the other main attraction. It has China's longest ice slide (320m long), igloo, and ice and snow labyrinth. It's the best place to experience the thrills of the ice and snow world to the fullest.

## DAY 07 HARBIN → KUALA LUMPUR

(BB/MOB)

- Transfer to airport for flight back to Kuala Lumpur.

### Disclaimer:

Sequences of itinerary are subject to local arrangement. Itineraries, meals, hotels and transportation are subject to change without prior notice.

Zhongdongtie Road Bridge  
中东铁路桥

7天 6晚

# 听风抚雪： 哈尔滨 + 漠河

哈尔滨 | 伏尔加庄园 | 漠河 | 北极村

## 第01天 吉隆坡 ✈️ 哈尔滨

(机上用餐/宵夜)

- 抵达哈尔滨，中国东北地区北部政治、经济、文化中心，被誉为欧亚大陆桥的明珠。
- 棉衣商场跟着自身需要添置御寒装备。

## 第02天 哈尔滨

(酒店早餐/道地午餐/俄式晚餐)

- 伏尔加庄园是俄罗斯文化为主题的国家4A级旅游景区。园区内的俄罗斯欧式城堡和复建的哈尔滨老式建筑融为一体，重现俄罗斯经典。在三只熊乐园亲手绘制属于自己的俄罗斯套娃、感受异域风情！体验惊险和刺激的城堡雪圈，尽情感受冰雪带来的乐趣！

## 第03天 哈尔滨 ✈️ 漠河 (1小时55分钟)

(酒店早餐/道地午餐/道地晚餐)

- 搭乘内陆航班飞往漠河 - 宛若一颗璀璨的明珠镶嵌在中国版图最北端。
- 松苑公园 - 1987年的一场大火让大兴安岭100多顷的森林树木毁于一旦，然而松苑却幸存下来，没有受到任何损害，因此，这片树林从此便得到了人们的重视。
- 北极星广场由一百多个台阶组成，是漠河的最高点，可以俯视漠河全县的全景。

## 第04天 漠河 - 94KM -

(酒店早餐/道地午餐/道地晚餐)

### 圣诞老人村 - 22KM - 北极村

- 鄂温克驯鹿园零距离亲密接触小驯鹿，给小鹿喂食与小鹿拍照。
- 中国的最北边陲漠河就有一座圣诞村。这里有圣诞老人屋、云杉圣诞树、圣诞广场、圣诞邮局。
- 漠河冰雪乐园 (含体验冰车、冰爬犁、冰球) 此外，还设有冰雕展览，展示了各种精美的冰雕艺术品，尽享冰雪盛宴。
- 北极村 (含景区环保车) 是中国大陆最北的临江村镇，来到北极村，才可以一览神州北极的风采。

※ 漠河北极村一位于北纬53度，处于弱极光区，是中国观赏北极光的最佳地点。然而，观测极光对天气条件要求极为苛刻，正因为极光的出现没有特定规律，这种神秘现象才更加令人心驰神往。

## 第05天 北极村 - 97KM -

(酒店早餐/道地午餐/道地晚餐)

### 漠河 ✈️ 哈尔滨

- 今日开启“寻北之旅”。
- 北极村碑—漠河的一个标志性建筑物，在此留影证明自己的足迹已踏及这神州大地的最北端。
- 最北邮局 (含每人一张明信片) 不仅是一个为当地居民提供邮政服务的重要机构，也吸引着众多游客前来体验在中国最北端寄出明信片的独特感受。
- 远眺最北哨所这里可是军事重地，就让我们保持着对边疆战士的尊敬之情，远远的向辛苦在一线的战士们致敬。
- 中国最北一家是典型的木刻楞小木屋，坐北朝南，这可是北中之北，是北极村的一块金字招牌呢。
- 北极沙洲徒步走至立有一座三棱锥形钢塔，上面清晰地标注着此处的经纬度。中国北极标志制作得很有特色，实际上是三个北字的半边，从中心呈120度角散射排列，所以从哪个角度看都是北字。
- 来到北极村，怎么能错过体验泼水成冰呢！
- 搭乘内陆航班返回哈尔滨。

## 第06天 哈尔滨

(酒店早餐/韩式烧烤/欢送宴)

- 打卡索菲亚教堂广场是中国保存最完美的典型拜占庭式建筑。
- 行走在中央大街，一边逛街，一边吃着马迭尔冰棍，即使是在室外气温摄氏零下20多度的寒冬。这才是逛中央大街的正确打开方式！
- 打卡历史遗迹百年中东铁路桥，是哈尔滨最重要的地标性老建筑。
- 打卡斯大林公园是松花江畔的一座开放式景观公园，著名的防洪胜利纪念碑就坐落在这里。
- 打卡中华巴洛克风情街犹如这条街道的名字一样，它具有巴洛克风格，所有的建筑也具有巴洛克的风味。
- 冰雪大世界不仅有令人惊叹的巨型冰雪雕塑，还有各种冰雪娱乐设施，如中国最长的冰滑梯一溜到底的刺激、冰屋和冰雪迷宫，让你可以尽情体验冰雪世界的乐趣和刺激。夜晚时分，灯光照亮了整个公园，为这些冰雪艺术品增添了神秘和浪漫的氛围。

## 第07天 哈尔滨 ✈️ 吉隆坡

(早餐盒/机上用餐)

- 前往机场，搭乘飞机返回吉隆坡。

Northern Lights, Mohe  
极光，漠河

### 免责声明:

行程次序以当地旅行社安排为准。行程，膳食，住宿，交通等可能会因不可抗拒因素而更动，恕不另行通知。

# Must See Attractions



## 经典地标 深入探索

### Carefree

悠游

Enjoy relaxation, truly appreciate the world

享受放松 感慨世界美好

### Capture

收获

The color & essence of each journey

旅途中的色彩和精髓

### Cozy

温馨

Vibes to create joyful moment together

共创愉悦片刻

### 伏尔加庄园 Volga Manor

Winter is the best time to visit snow-covered **Volga Manor**. **Pavlov's Castle**, **Pushkin's Salon**, **St. Nicholas Church**, the **Oriental Unicorn**, the **Petrov Palace** are all exquisite Russian-styled buildings, standing in the "Volga River", just like a beautiful fairy tale world. You can experience the thrilling snow circle, DIY Russian nesting doll, taste the pure Russian food, and feel the rich Russian food culture.

冬季正是来伏尔加庄园的最佳时候，白雪覆盖着伏尔加庄园，放眼望去，巴甫洛夫城堡、普希金沙龙、圣尼古拉教堂、东方独角兽、彼得洛夫宫，一座座精美的俄罗斯风情建筑，矗立在“伏尔加河”上，仿佛一个绝美的童话世界。这里你能体验惊险刺激的雪圈，亲手制作属于自己的俄罗斯套娃，品尝纯正的俄餐，感受浓郁的俄罗斯饮食文化。



### 中国圣诞村 The Arctic Christmas Village

The **Arctic Christmas Village** integrates the western Christmas elements, into a small village where there are retro warm wooden house villas, colorful cute bells, and different forms of ice sculpture works, as if crossing into the exotic world of the West through this small village.

中国圣诞村融合了西方的圣诞元素，有复古温馨木屋别墅，有色彩缤纷的可爱铃铛，还有形态各异的冰雕作品，走进这个小村庄，仿佛穿越到了西方的异域世界，拾起儿时的天真和纯洁，做一次童话故事里的主人公。

### 最北邮局 Northernmost Post Office

Send a postcard with the "northernmost postmark" at the **northernmost post office** and send it home from the northernmost part of China to tell your family and friends that you have "found the north!" Add a touch of unique meaning to your journey!

在最北邮局寄上一张印有“最北邮戳”的明信片，从中国最北的地方寄回家，告诉家人、朋友，你“找到北啦！”给自己的旅途添上一抹独特的意义吧！



## 体验泼水成冰 ❄️ Splashing water into ice

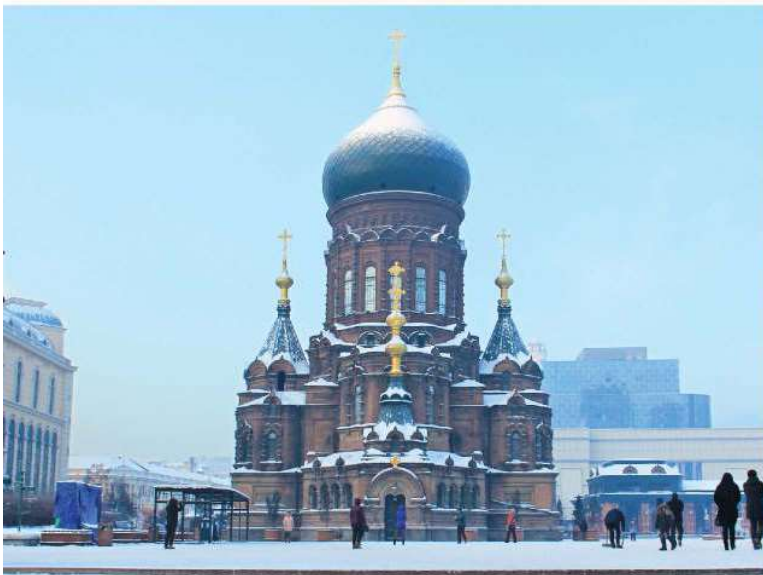
**Splashing water into ice** - This activity requires an extremely cold environment, and it is a unique experience to be able to experience the unconventional changes in water in such exceptional natural conditions.

**体验泼水成冰**—这种活动要求在极寒的环境中进行，能够在如此特殊的自然条件下体验到水的非常规变化，是一种独特的体验。

## 冰雪世界 ❄️ Ice & Snow World

Ice & Snow World at night is like a fantastic ice kingdom, glittering in the cold winter of Harbin. When night falls, the lights illuminate the whole park, reflecting those exquisite ice and snow sculptures in a picturesque way. Inside the Ice & Snow World, huge ice castles and lifelike animal sculptures shimmer under the cool lights, as if from a fairy-tale fantasy world.

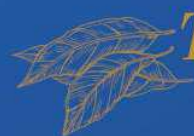
夜晚的**冰雪世界**如同一个梦幻般的冰雪王国，在哈尔滨的寒冬中熠熠生辉。当夜幕降临，灯光点亮了整个公园，将那些精美的冰雪雕塑映衬得如诗如画。冰雪世界内，巨大的冰雪城堡和栩栩如生的动物雕塑在冷艳的灯光下闪烁着，仿佛来自童话般的奇幻世界。



## 哈尔滨时下最潮打卡景点 📷 Harbin trendiest spots

Harbin trendiest spots to visit: Sofia Square, Zhongyang Avenue, Zhongdongtie Road Bridge, Stalin Park, Chinese Baroque Street

打卡哈尔滨时下最潮景点：索菲亚教堂广场、中央大街、中东铁路桥、斯大林公园、中华巴洛克风情街。



# Taste Indulge 味蕾



## Russia Cuisine + Red Wine 俄式西餐 + 红酒

Pure Russian food, feel the rich Russian culture.

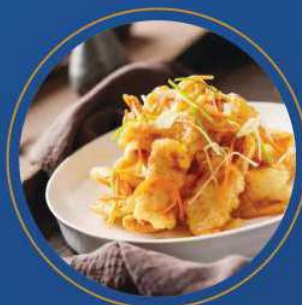
纯正的俄餐, 感受浓郁的俄罗斯文化。



## Northeast Iron Pot Stew 东北铁锅炖

Northeastern iron pot stew is not only delicious, but also has a strong sense of the countryside, is the Northeast people often eat in winter warm food.

东北铁锅炖不仅味道鲜美, 而且具有浓厚的乡土气息, 是东北人冬季常吃的暖心美食。



## Fried Pork in Scoop 老厨家锅包肉

Fried Pork in Scoop is characterized by its crispy outer skin, tender meat and unique sweet and sour taste.

老厨家锅包肉的特点在于外皮酥脆, 肉质鲜嫩, 酸甜口味独特。



## Korean BBQ 韩式烧烤

Korean BBQ in Harbin combines the eating habits of the Northeast region, retaining the essence of traditional Korean BBQ while incorporating local ingredients and cooking techniques.

哈尔滨的韩式烧烤结合了东北地区的饮食习惯, 既保留了传统韩式烧烤的精髓, 又融入了本地的食材和烹饪技巧。

Remarks/备注:

All pictures in brochure are for illustration purpose only/  
行程上的图片仅供参考

Days 天数	BREAKFAST 早餐	LUNCH 午餐	DINNER 晚餐
1	-	机上用餐 Meal on board	宵夜 Supper
2	酒店早餐 Hotel Breakfast	小鸡炖蘑菇 (88) Mushroom Chicken Stew	俄式西餐 + 红酒 (168) Russia Cuisine + Red Wine
3	酒店早餐 Hotel Breakfast	中式合菜 (60) Chinese Cuisine	东北铁锅炖 (80) Northeast Iron Pot Stew
4	酒店早餐 Hotel Breakfast	兴安山珍 (80) Xing An Flavor	黑龙江鱼风味 (80) Heilongjiang Fish Flavor
5	酒店早餐 Hotel Breakfast	中式合菜 (60) Chinese Cuisine	老厨家锅包肉 (100) Fried Pork in Scoop
6	酒店早餐 Hotel Breakfast	韩式烧烤 (100) Korean BBQ	欢送宴 (200) Farewell Dinner
7	早餐盒 Boxed Breakfast	机上用餐 Meal on board	-



# Accommodation 旅宿



Embark on a complete journey at 4-star & 5-star hotel, offering a quality & comfortable stay.  
全程安排四+五星级酒店，让您在整个旅程中享受到有质量且舒适的住宿环境。



Sheraton Hotel



Arctic Village Peak Yuezhijue Hotel



Suojin Hotel

STAY 留宿	LOCATION 地点	HOTEL 酒店	RATED 等级	REMARKS 备注
2 Nights	Harbin	Sheraton or similar	★★★★★	Modern designed hotel at convenient location
1 Night	Mohe	Arctic Village Peak Yuezhijue Hotel or similar	★★★★★	Best local hotel
1 Night	Beiji Village	Suojin Hotel or similar	★★★★★	Best local hotel
2 Nights	Harbin	Sheraton or similar	★★★★★	Modern designed hotel at convenient location



Ewenke Reindeer Park  
鄂温克驯鹿园



THE SIGNATURE TOURS

Travel Partner:

旅者之家  
TRAVELERS HUB

TRAVELERS HUB TOURS SDN BHD

(896493-M) TDC No - KPL/LN: 6250

2-3-3A, Kompleks Kantonmen Prima,  
No: 698, Batu 4 Jalan Ipoh, 51200 Kuala Lumpur, Malaysia.  
Tel: +6016-3919333 | +603-27326615 | Fax: +603-27326619  
Web: [www.travelershut.com.my](http://www.travelershut.com.my)  
Email: [web@travelershut.com.my](mailto:web@travelershut.com.my)