

Amazing 日本  
JAPAN

8D5N  
大阪 / 合掌村 /  
立山黒部【雪の大谷】 / 東京  
OSAKA / SHIRAKAWA-GO /  
TATEYAMA KUROBE ALPINE / TOKYO

Tour Code: JGB-6



旅者之家  
TRAVELERS HUB



Japan  
日本



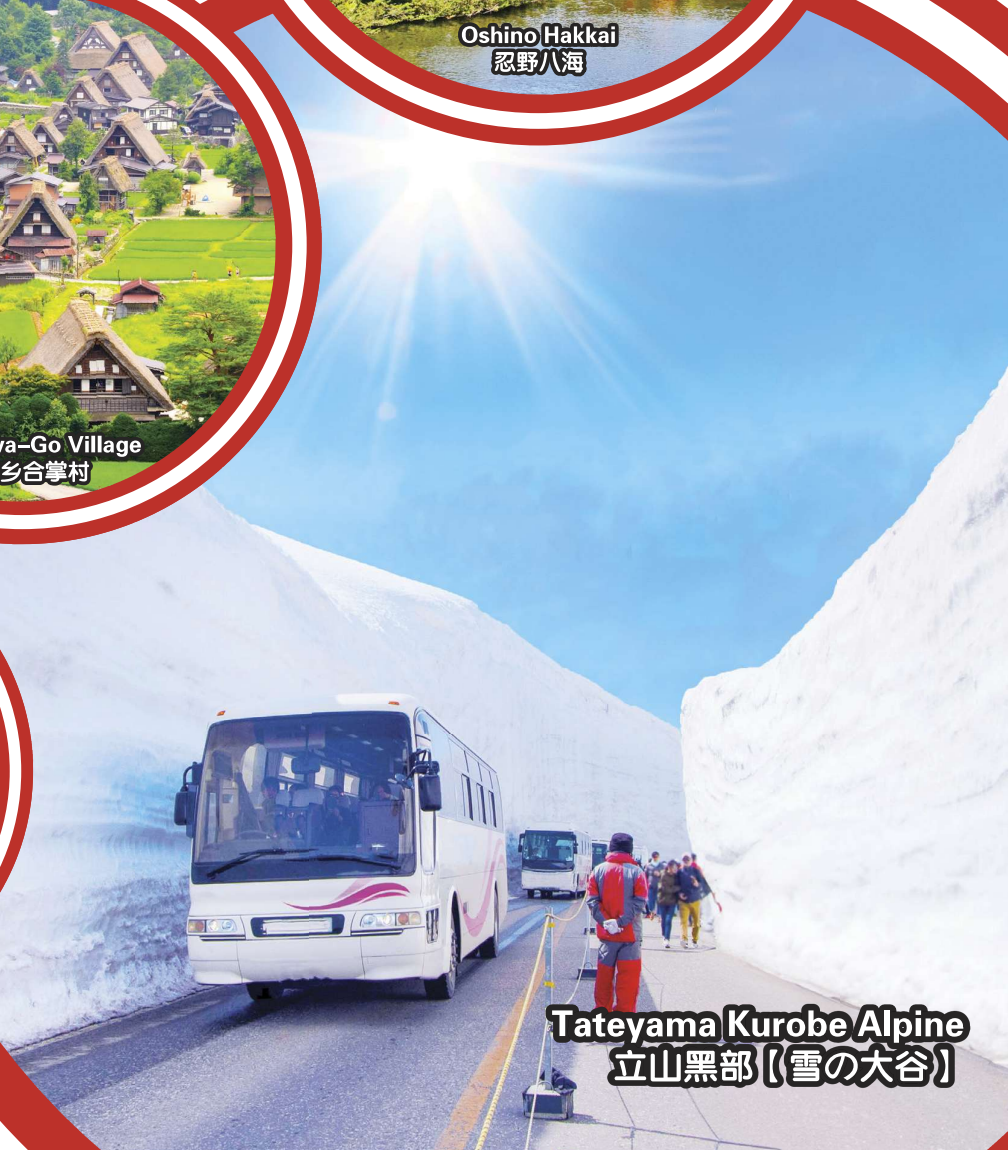
Oshino Hakkai  
忍野八海



Shirakawa-Go Village  
白川乡合掌村



Fushimi Inari Taisha  
伏见稻荷大社



Tateyama Kurobe Alpine  
立山黒部【雪の大谷】

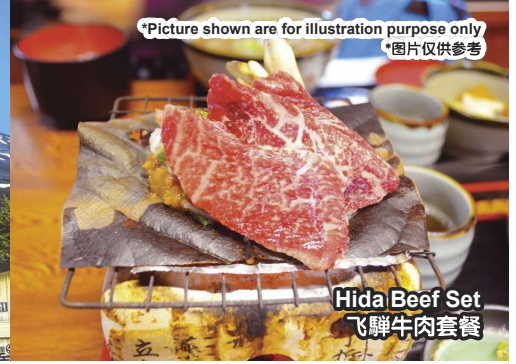
行程次序，以当地旅社安排为准。  
Sequences of Itinerary are subject  
to local arrangement.



Lake Ashi Pirate Cruise  
芦之湖海盗船



Mt. Fuji 5th Station  
富士山五合目



Hida Beef Set  
飞驒牛肉套餐

\*Picture shown are for illustration purpose only  
\*图片仅供参考



## SCHEDULE

### D1 DEPARTURE ✈️ OSAKA

### D2 ARRIVAL OSAKA 🚗 KYOTO GIFU (MOB/L/D)

- ☑ Kiyomizu Temple
- ☑ Fushimi Inari Taisha

### D3 GIFU 🚗 SHIRAKAWA-GO TAKAYAMA (B/L/D)

- ☑ Shirakawa-Go Village (UNESCO World Heritage)
- ☑ Takayama Old Town

### D4 TAKAYAMA 🚗 TATEYAMA KUROBE ALPINE MATSUMOTO (B/L/D)

- ☑ Tateyama Kurobe Alpine Route  
(Travel with 6 different public transports)

### D5 MATSUMOTO 🚗 HAKONE MT. FUJI (B/L/D)

- ☑ Sengen Shrine
- ☑ Oshino Hakkai
- ☑ Mt. Fuji 5th Station (Subject to weather condition)

### D6 MT.FUJI 🚗 TOKYO (B/L/D)

- ☑ Lake Ashi Pirate Cruise
- ☑ Gotemba Outlet
- ☑ Shinjuku
- ☑ Duty Free Shop

### D7 TOKYO 🚗 DEPARTURE (B/L/D)

- ☑ Imperial Palace (Exterior view)
- ☑ Sensoji (Asakusa Kanon Temple)
- ☑ Nakamise Shopping Street
- ☑ Ginza

### D8 ARRIVAL (MOB)



✓ 5 Breakfast / 6 Lunch / 6 Dinner

#### Special Cuisine:

- ★ Toban Yaki Set
- ★ Pork Cutlet Set
- ★ Ramen Set
- ★ Hot Spring Hotel Cuisine
- ★ Japanese Cuisine
- ★ BBQ Buffet
- ★ Hida Beef Set

## TOURIST ATTRACTIONS:

### KYOTO

- ◆ **Kiyomizu Temple** - is renowned for its construction which uses no nails to support the elaborate wooden structure of the main hall. And with a quaint old lane lined with pottery shops lead up to this famous temple.
- ◆ **Fushimi Inari Taisha** - the shrine sits at the base of a mountain also named Inari which is 233 meters above sea level. Early Japan, Inari was seen as the patron of business merchants and manufactures have traditionally worshipped Inari. Each of the torii at Fushimi Inari Taisha is donated by a Japanese business. First and foremost, though, Inari is the god of rice.

### SHIRAKAWA-GO

- ◆ **Shirakawa-go Village** - the Historic Villages of Shirakawa-gō are one of Japan's UNESCO World Heritage Sites. These villages are well known for their houses constructed in the architectural style known as gash O-zukuri. The Gasshō-zukuri, "prayer-hands construction" style is characterized by a thatched and steeply slanting roof resembling two hands joined in prayer. The design is exceptionally strong and, in combination with the unique properties of the thatching, allow the houses to withstand and shed the weight of the region's heavy snowfalls in winter.

### TATEYAMA KUROBE ALPINE

- ◆ **Tateyama Kurobe Alpine Route** - a famous mountain sightseeing route between Tateyama, Toyama and Omachi, Nagano, Japan. The route is just 37 km in length, but the vertical interval is as large as 1,975m. It uses 6 different public transports with 5 different modes, namely funicular, bus, trolleybus, aerial tramway, and walking. Take cable car from Tateyama Station to Bijodaira enjoy the Beautiful Woman Cedar viewing. Then highland bus to Murodo, and take tunnel trolley bus, you can enjoy the snow corridor. Then continue to journey by trolley bus to Daikanbo. Then take ropeway to Kurobedaira station. You can see the highest arch dam in Japan which about 1500m.

### HAKONE

- ◆ **Mt. Fuji 5th Station** - At 3776 meters above sea level, the Fuji Subaru Line 5th Station offers a commanding view of the Fuji Five Lakes area below, making it a popular spot even for those who are not intent on climbing the mountain.
- ◆ **Lake Ashi Pirate Cruise** - Was formed in the caldera of Mount Hakone after the volcano's last eruption 3000 years ago. And the boat ride could enjoy dreams and romance while gazing upon the delights of Mt. Fuji.

### TOKYO

- ◆ **Sensoji (Asakusa Kanon Temple)** - is dedicated to the god of mercy, Kanon. And is famous for its Kaminari-mon or Thunder Gate. And you could walk along Nakamise Shopping Arcade, is bustling with people buying traditional Japanese snacks, which you could see many snack stalls demonstrate how they make it and then sell it still piping hot.
- ◆ **Imperial Palace** - is located on the former site of Edo Castle, a large park area surrounded by moats and massive stone walls in the center of Tokyo, a short walk from Tokyo Station. It is the residence of Japan's Imperial Family.



#### HOTEL OR SIMILAR (5 NIGHTS)

- ✓ Gifu Resol Hotel / Quintessa Hotel Ogaki / Miyako Hotel Gifu or similar class x1 Night
- ✓ Hida Hotel Plaza or similar class x1 Night
- ✓ Iroha Grand Hotel Matsumoto Eki-Mae / Natural Hot Spring Azumi no Yu Onyado Nono Matsumoto or similar class x1 Night
- ✓ Fujimihana Resort Hotel or similar class x1 Night
- ✓ Sunshine Prince City Hotel / Dai-ichi Hotel Ryogoku / Hotel Villa Fontaine Grand Ariake or similar class x1 Night

Disclaimer: Due to Covid-19 travel restrictions, local / religious festivals, public holidays, weather condition, transport technical issue, acts of nature, Golden Destinations reserved the right to alter the sequence or change, amend or alter the itinerary if necessary, with or without prior notice.

Remark: There will be no refund or replacement if the tour logistic affected by the above issue. All pictures are for illustration purpose only.



# General Information

## · 日本 JAPAN ·



<b>货币</b> Currency 	Japanese Yen - JPY 日元 - JPY	<b>信用卡</b> Credit Card 	* Credit card are used widely in Japan * 致电信用卡在日本都能通行
<b>货币兑换率</b> Exchange Rate 	100 JPY = MYR 3.30 100 日元 = 马币 3.30 <small>*Subject to currency of the day* *以当天汇率为准*</small>	<b>拨号代码</b> Dial Code 	Japan : +81 日本 : +81
<b>电压</b> Voltage 	Voltage - 100 V 电压 - 100伏特	<b>插座</b> Power Socket 	Type A / 类型 - 2 flat blade pin / 两脚扁型插头 Type B / 类型 - 2 flat blade pin + 1 round pin / 两脚扁型 + 一圆型插头
<b>时差</b> Time Different 	Japan - 1 hour ahead of Malaysia 日本 - 标准时差快马来西亚时间1小时	<b>行李托运</b> Luggage Allowance 	Each individual are entitled to check in 1 luggage of not more than 20 kg and a hand carry bag not more than 7 kg. 每人只限携带一件不超过7公斤的手提行李上机, 以及托运行李不超过20公斤。
<b>气候</b> Weather 	<div> <input type="checkbox"/> Spring 春季 3月 - 5月 Mar to May 20°C - 6°C                             <input type="checkbox"/> Summer 夏季 6月 - 8月 Jun to Aug 28°C - 19°C                             <input type="checkbox"/> Autumn 秋季 9月 - 11月 Sep to Nov 25°C - 10°C                             <input type="checkbox"/> Winter 冬季 12月 - 2月 Dec to Feb 13°C - 3°C                         </div> <small>*Subject to weather of the day* *以当天天气报告为准*</small>		
<b>飞机型号</b> Aircraft Type 	 A330		

Departure Date:

出发日期:

Tour Fare:

团费:

Tipping:

小费:

Visa:

签证:

Flight:

航班行程:

Airport Tax & Fuel Surcharge:

机场税及燃油附加费:

Agent Collection Fee:

旅行社代收费:

Travel Insurance:

旅行保险:

TOTAL:

总数:

GD Partner:

旅者之家

TRAVELERS HUB

TRAVELERS HUB TOURS SDN BHD

(896493-M) TDC No - KPL/LN: 6250

2-3-3A, Kompleks Kantonmen Prima,  
No: 698, Batu 4 Jalan Ipoh, 51200 Kuala Lumpur, Malaysia.  
Tel: +6016-3919333 | +603-27326615 | Fax: +603-27326619  
Web: www.travelershut.com.my  
Email: web@travelershut.com.my