

# CONCIERGE SUITES & STATEROOM



When you sail as a Concierge Guest, you'll receive exclusive perks like priority boarding; exclusive access to private spaces, Concierge Lounge, luxury retail stores, and premium spas and fitness facilities; and the attention of a dedicated team—ensuring you feel pampered before and during your voyage.

At the end of your magical day, retire to your spacious Concierge stateroom, filled with luxurious amenities and whimsical Disney touches. Whether it's personalized service, exclusive areas or unmatched convenience—every indulgence is refined to perfection.

### Concierge Features & Amenities

- Elegantly appointed staterooms and suites offer unique Disney touches.
- Most concierge staterooms feature king beds.
- Concierge Family Staterooms feature a connecting, secondary bedroom with its own entrance and bathroom.
- Depending on category, some Concierge accommodations offer upscale amenities like walk-in closets, bathrooms with double sinks, and private whirlpools.

## CONCIERGE ROYAL SUITE

Approx. 228.6 sqm  
Sleeps 6  
Master bedroom with king bed  
Children's bedroom with bunk bed  
Living area with double wall-pull down bed



## CONCIERGE OCEANVIEW SUITE

From 73.8 – 107.4 sqm  
Sleeps 5-6  
Master Bedroom with King Bed  
Living area with single/double lower pull-down bed and double sofa bed



## CONCIERGE GARDEN VIEW STATEROOM

Approx. 47.1 sqm  
Sleeps 6  
King bed, double sofa bed & secondary bedroom with double full bed



## CONCIERGE OCEANVIEW STATEROOM

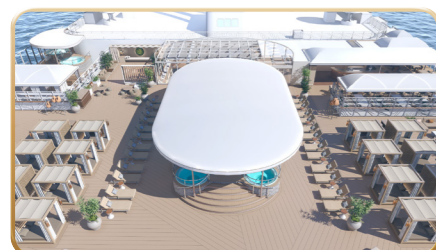
Approx. 46.4 – 50.6 sqm  
Sleeps 5-6  
King bed, double sofa bed & secondary bedroom with double bed



## CONCIERGE INSIDE STATEROOM

Approx. 39.2 sqm  
Sleeps 4-6  
King bed, double sofa bed & secondary bedroom with double bed

Exact amenities and layout may vary slightly depending on stateroom location and category.



CONCIERGE POOL & SUNDECK



CONCIERGE LOUNGE



CONCIERGE LOUNGE



# Disney ADVENTURE

Disney CRUISE LINE

BOOKINGS NOW OPEN

## ADVENTURE IS CALLING

Step aboard the *Disney Adventure*, the first *Disney Cruise Line* ship to sail from Asia, and find yourself at the heart of an unforgettable journey. As the voyage begins and fantasy takes hold, your dream vacation becomes a dazzling reality - where every moment is both a journey and a destination.

Deck: 19  
Capacity: 6700 passengers  
Tonnage: Approx. 208,000 GT  
Length: 1,122 feet (342 meters)

## SEVEN THEMED AREAS | Unique to the *Disney Adventure*



### Disney Imagination Garden

Inspired by 100 years of heroic and heartwarming Disney tales, this enchanted valley include a state-of-the-art theatrical stage, Quick-Service eateries and a selection of garden-view staterooms.



### Disney Discovery Reef

A mesmerizing retreat that brings beloved underwater stories from Disney and Pixar to life! Enjoy various Quick-Service dining or explore a charming breezeway lined with an array of upscale dining and café venues.



### Town Square

In this magical land that celebrates Disney Royals, you can enjoy themed dining, unwind at quaint cafés, discover whimsical keepsakes at delightful shops or watch enchanting Broadway-style musicals at the iconic *Walt Disney Theatre*.



### San Fransokyo Street

This family entertainment area inspired by the lively city from Disney's *Big Hero 6* is designed like a bustling street market and brimming with interactive arcade games, activities, shops, cinemas, youth clubs and more.



### Wayfinder Bay

Follow your heart to *Wayfinder Bay*, an open-air retreat inspired by Disney's *Moana*—where relaxation meets wonder. Unwind in the wading pool with a refreshing beverage or partake in interactive events and captivating live shows.



### Toy Story Place

Step into this whimsical water playland and discover an array of water attractions including a *Sunnyside Family Pool*, *Woody and Jessie's Wild Slides*, the *Flying Saucer Splash Zone*, the *Toy Story Splash Pad* and multiple whirlpools.



### Marvel Landing

Soar into Avengers-level adventures with three all-new dynamic attractions inspired by iconic Super Heroes. Experience *Ironcycle Test Run*—the longest roller coaster at sea, zip around an oversized toy set track at *Pym Quantum Racers* or blast off into high-soaring feats on *Groot Galaxy Spin*.

## UNFORGETTABLE DINING ADVENTURES

Savor everything from elegant culinary journeys to signature Disney dining with Characters to quick casual bites. Along your voyage, you'll dine at three distinctive restaurants where a preset dinner schedule is included in every booking and paired with personalized service from a dedicated team that learns your preferences.



### Hollywood Spotlight Club

Soak in the glitz and glamor of Hollywood's Golden Age at this star-studded dinner club. Be dazzled by live musical performance with the most famous Disney VIPs of all—Mickey Mouse and friends.



### Navigator's Club

Transport back to the golden age of cruising and be treated to exciting tales and musical performances featuring globe-trotting Mickey Mouse, Minnie Mouse, Donald Duck and Daisy Duck.



### Animator's Table

Be captivated by the timeless magic of ink-and-paint animation and watch your hand-drawn sketches come alive as vibrant animations right before your eyes.



### Animator's Palate

Enjoy an innovative dinner show celebrating the filmmaking legacy of Disney and Pixar Animation Studios, and watch as the dining room transforms from black and white to vibrant, full-spectrum color.



### Enchanted Summer Restaurant

Revel in the charm of two distinct cozy village dining halls inspired by Disney's *Tangled* and *Frozen*. Enjoy buffet-style breakfast and lunch during the day, and experience a magical dinner at night.



### Pixar Market Restaurant

Be inspired by the art and artists of the legendary Pixar Animation Studios, and immerse in the charm of beloved films - from *Inside Out* to *Monsters University* and more. Enjoy buffet-style breakfast and lunch during the day, and experience a magical dinner at night.

## QUICK-SERVICE DINING

Delight in a wide array of themed eateries offering an enticing blend of international flavors, regionally inspired dishes from Asia, and Disney-inspired treats. Other Quick-Service dining options include **Cosmic Kebabs**, **Stitch's Ohana Grill**, **Pizza Planet**, **Wheezy's Freezies** and more.



### Gramma Tala's Kitchen

Discover an imaginative menu featuring diverse flavors from the Pacific and Asia while soaking in the vibrant South Pacific-style décor inspired by the island flair of Disney's *Moana*.



### Mowgli's Eatery

Inspired by Mowgli's epic journey through the jungles of India in Disney's *The Jungle Book*, this casual eatery serves rich flavors in Indian, vegetarian and regional dishes.



### Bewitching Boba and Brews

Disney villains like Ursula from Disney's *The Little Mermaid* are brought to life in this eclectic café serving delightfully wicked bubble tea and other delicious concoctions.

For an added touch of luxury, savor exquisite gourmet meals at exclusive venues like **Palo Trattoria** and **Mike & Sulley's Flavors of Asia**, available for an extra charge.

## ACTIVITIES FOR EVERYONE



### World-Class Entertainment

Experience Broadway-style productions including **Remember**, an all-new heartfelt musical and **Disney Seas the Adventure** a fan-favorite show featuring beloved Characters and iconic Disney songs. Enjoy upbeat deck parties, movie screenings, and unforgettable Character interactions.



### Action-Packed Kids Clubs

Kids, tweens and teens can embark on new adventures at unique, dedicated spaces led by specially trained Disney Youth Counselors. Little ones ages 3 to 10 can let their imaginations soar at **Disney's Oceaneer Club**. Tweens ages 11 to 14 have a vibrant hangout at **Edge** and Teens ages 14 to 17 have an ultra-exclusive retreat at **Vibe**.



### Fun & Relaxation for Adults

Explore a range of luxury and leisure spaces designed with adults in mind. Unwind in themed lounges from iconic Disney stories, indulge in an upscale shopping experience, pamper yourself with a relaxing spa treatment, wellness and fitness activities—all amid the magic that is uniquely Disney.

## ARTFUL ACCOMMODATIONS

Whether you're planning a fun-filled family vacation, a friends getaway or a couples escape, Disney staterooms and suites ensure your relaxation and comfort. Each stateroom and suite features magical touches you won't find any place else, including artwork inspired by Disney, Pixar or Marvel stories.

### Stateroom Features

- Elevated bed frames for luggage storage
- Split bathrooms in most staterooms
- 24-hour room service
- Queen beds (double) in Deluxe staterooms
- Interactive TVs, USB-A and USB-C charging ports, full-length mirrors, in-stateroom safes

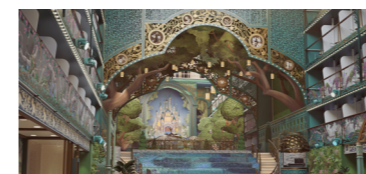


### VERANDAH STATEROOMS

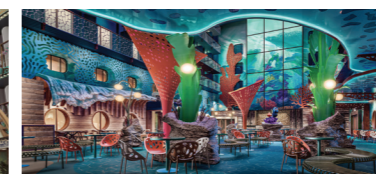
Created with families in mind, our most popular staterooms sleep up to 4 Guests and feature a private balcony offering breathtaking views of either the ocean, *Disney Imagination Garden* or *Disney Discovery Reef*.

#### Overview

Deluxe Garden View Stateroom with Verandah	23.5 sqm
Deluxe Reef View Stateroom with Verandah	23.5 sqm
Deluxe Oceanview Stateroom with Verandah	23.5 sqm
Stateroom with Verandah	19.4 sqm



*Disney Imagination Garden*



*Disney Discovery Reef*



### OCEANVIEW STATEROOMS

Designed to accommodate up to 4 Guests, these beautifully appointed staterooms feature individual single beds, ensuring a good night's sleep for everyone. Gaze out the large porthole window for breathtaking views of the sea.

#### Overview

Deluxe Oceanview Stateroom	19.4 sqm
Oceanview Stateroom	13.5 - 15.3 sqm



### INSIDE STATEROOMS

Ideal for adventurous friends traveling together, our Inside staterooms sleep up to 4 Guests. After a day of fun and adventure, it's the perfect place to recharge with a good night's sleep.

#### Overview

Deluxe Inside Stateroom with Reef View	19.4 sqm
Deluxe Inside Stateroom	19.4 sqm
Inside Stateroom	13.5 - 15.3 sqm

For more information, contact your preferred agent or visit the *Disney Adventure* website.