

旅者之家

TRAVELERS HUB

FROM APR TO OCT • GUARANTEED DEPARTURE • Apr to Oct Guaranteed Departure

Proudly serving travelers for over 20 years, trusted by over 500,000 satisfied customers.

Itinerary Highlights

Czech Republic

In the Czech spa towns, experience classical wellness traditions.

Sanssouci Palace

The splendor of Prussian royalty returns.

Dresden

Blends classical and modern art.

Berlin

The Berlin Wall, Reichstag, and Brandenburg Gate mark Germany's dramatic rebirth.

Warsaw Old Town

Embodies national resilience.

Český Krumlov

Cobbled streets and a medieval castle immerse you in Bohemian charm.

Auschwitz concentration camp

Prompts solemn reflection on history and hope for peace.

Wieliczka Salt Mine

Explore the breathtaking salt mine wonders, a subterranean world of awe in Central Europe's historical and cultural journey.



Berlin



Poznan

Warsaw

GERMANY

POLAND

Dresden

Karlovy Vary

Prague

Cesky Krumlov



Brno

Cracow

Oswiecim (Auschwitz)



Silver line (Heritage Trail) *New*

Germany • Czech Republic • Poland

7 Days 6 Nights Itinerary • Every Tuesday - Prague

- D1 (Tues) Prague → Karlovy Vary → Dresden
- D2 (Wed) Dresden → Berlin
- D3 (Thur) Berlin → Potsdam → Poznan
- D4 (Fri) Poznan → Warsaw
- D5 (Sat) Warsaw → Cracow
- D6 (Sun) Cracow → Oswiecim (Auschwitz) → Brno
- D7 (Mon) Brno → Cesky krumlov → Prague

Tour Price

Adult €783 per person

Child €713 (2-11 years old)

Tour fee includes:

Luxury Coach, City tax €20, 6 nights 3-4 stars Hotel and Breakfast (2 nights guaranteed 4 stars), Professional Chinese and English speaking tour guide

Tour fee not includes:

Sightseeing Tickets, Lunch, Dinner, Plane tickets, VISA fee, Travel insurance, Gratuity (10 EUR/pax/day), Single supplement €360 (6 nights)

Extra Service: Pre / post-hotel: 75 EUR/pax/night
Airport Transfer: 55 EUR/pax/ride



SILVER LINE (Heritage Trail) • 7 Day Tour



Czech Republic



Germany



Poland

GUARANTEED DEPARTURES THROUGHOUT THE YEAR (Weekly April to October)

24th March – 19th October 2026 (Once a week)

【Tuesday】 🚗🚆+ Prague→Karlovy Vary→Dresden (308km)

After gathering in Prague, proceed to visit the historic spa city of Karlovy Vary. The city is renowned for its abundant hot springs, with 13 main springs and around 300 smaller springs. This location served as the filming site for the movies *Casino Royale* (007) and *Last Holiday* at the **Grandhotel Pupp**, known as the most luxurious high-class hotel in Eastern Europe. After sightseeing, we will cross the border to Germany to explore the historic city of Dresden. Dresden is celebrated as one of Europe's most beautiful cities and is often referred to as the "Florence on the Elbe." Upon arrival, visit iconic landmarks such as the **Dresden Frauenkirche** (Church of Our Lady), the **Procession of Princes**, the Dresden Castle (exterior), and Brühl's Terrace. Accommodation: In Dresden or nearby cities.

【Wednesday】 Dresden→Berlin + 🚗🚆 (200km)

Depart in the morning for Germany's capital Berlin, a city whose history has left it with a diverse and eclectic array of architectural styles. Every regime that has claimed Berlin as its capital has undertaken ambitious architectural projects, each leaving its own distinctive mark on the city's skyline. Upon arrival, begin a sightseeing tour of historical landmarks that showcase Berlin's rich cultural and architectural heritage. Highlights include Germany's tallest structure, the **Berlin TV Tower**, remnants of the **Berlin Wall**, **Checkpoint Charlie**, the Straße des 17. Juni (June 17th Street), the Victory Column, the **Reichstag** (New Parliament Building), the iconic **Brandenburg Gate**, a symbol of the city's reunification, and more. The tour leader may arrange an optional (own expense) boat ride to enjoy a leisurely river cruise and take in the sights of this bustling city's heart. Accommodation: In Berlin or nearby cities.

【Thursday】 🚗🚆+ Berlin→Potsdam →Poznan (323km)

This morning, you may choose to visit Potsdam for free exploration within the city or join a tour to the **Sanssouci Palace** located in the outskirts. Built by Prussian King Frederick II, Sanssouci Palace and its gardens are recognized as a UNESCO World Heritage Site, often referred to as the "**Prussian Versailles**" due to their grandeur and opulence. In the afternoon, we travel to Poland to visit its oldest city, Poznań, passing by the world's **tallest Christ statue** for a group activity along the way. Poznań holds a vital place in Polish history as the first capital of a unified Poland and the site where adoption of Christianity started in 966. The Old Town, surrounded by colorful facades, features quaint architecture and modern shopping streets, offering a charming blend of the past and present. Accommodation: In Poznań or nearby cities.

【Friday】 Poznan→Warsaw + 🚗🚆 (311km)

Poland is a member of both the European Union and the Schengen Visa Zone, but it continues to use the Polish Zloty (PLN) as its currency. In the capital city, Warsaw, modern buildings rise from the remnants of the past, creating a striking contrast between contemporary glass skyscrapers and historic architecture. Explore the post-war reconstructed Old Town, including the **Royal Castle**, the Market Square lined with restaurants and bars, and the iconic **Mermaid Statue** that symbolizes Warsaw. Stroll through the Barbican and ancient city walls to reach the New Town, where you can visit the house of **Marie Curie**, a two-time Nobel Prize laureate. The tour continues past the **Presidential Palace** to the **Holy Cross Church**, which holds the heart of composer **Frédéric Chopin**, and to the statue of astronomer **Nicolaus Copernicus** near the University of Warsaw. Finally, admire the **Palace of Culture and Science**, a gift from the Soviet Union to Poland. Accommodation: In Warsaw or nearby cities.

【Saturday】 🚗🚆+ Warsaw→Cracow (290km)

In the morning, depart for the **Wieliczka Salt Mine**, a UNESCO World Heritage Site renowned for its stunning and intricate salt carvings that adorn its tunnels, captivating visitors from around the world. Known as a "**Palace of Salt Art**," the mine attracts approximately 1.5 million tourists annually. It reaches a depth of 327 meters and spans over 287 kilometers, featuring rooms, chapels, and underground lakes, resembling a subterranean city. Afterward, we proceed to Kraków, Poland's second-largest city and a former capital for 500 years. Kraków boasts a wealth of exquisite historical monuments, earning its place on the UNESCO World Heritage list. Upon arrival, explore the landmarks of the Old Town, including **St. Mary's Basilica**, the Market Square, the **Cloth Hall**, the Town Hall Tower, and **St. Adalbert's Church**. Accommodation: In Kraków or nearby cities.

【Sunday】 Cracow→Oswiecim→Brno (335 km)

Begin the day with a visit to the **Auschwitz-Birkenau Memorial and Museum**, starting with an exterior view of Auschwitz II-Birkenau. This site, marked by its tragic history, serves as a solemn reminder of one of humanity's darkest

chapters. Then proceed to Auschwitz I, where an optional guided tour (own expense) offers an in-depth exploration. Walk through the infamous "**Arbeit Macht Frei**" gate, a symbol of false hope for countless Jewish victims who entered, many never to leave. After reflecting on this poignant history, continue the journey across the border to the Czech Republic's second-largest city, Brno. In the Freedom Square, admire the iconic Plague Column and fountain, while nearby, the **Capuchin Crypt** near the bustling Cabbage Market offers a unique cultural experience. Surrounding the square are various restaurants and cafés, perfect for enjoying a coffee and immersing yourself in the daily life of locals. Accommodation: In Brno or nearby cities.

【Monday】 Brno→Český krumlov →Prague +   (420km)

Visit the enchanting **Český Krumlov**, a UNESCO World Heritage Site that has captivated visitors since its founding in the 13th century. The old town's cobblestone streets and the iconic castle tower are its most dazzling landmarks, making it an ideal destination for a leisurely stroll and a taste of medieval charm. Český Krumlov is also home to the Czech Republic's second-largest castle, featuring 40 palaces and towers. From the castle's bridge gallery, enjoy a breathtaking panoramic view of the old town, with its postcard-perfect sea of red rooftops. After exploring the town, drive onward to Prague. Arrive in Prague by dusk. Accommodation: In Prague or nearby cities.

Tips:  **Paid Airport Transfer** and  **Pre and Post Hotel services are available in Prague, Berlin and Warsaw**

SILVER LINE(Heritage Trail) • Optional list

The optional price list function as a reference for the calculation of your expenses during your trip. All prices shown are for reference only and is subject to the current price on spot. Customers can decide to purchase excursion tickets or meals according to their personal preferences. Participating in any proposed excursion program is not mandatory. However, each person must pay the tour guide and driver a gratuity of € 10 per day. **Group activity fee** must also be collected. Optional and entrance prices are for reference only. Please pay these expenses in cash to the tour guide.

OPTIONALS		Price
Optional Activities	[Wednesday] Berlin TV Tower (Standard Ticket)	€34.50
	[Wednesday] Berlin Boat cruise	€25
	[Friday] Warsaw Palace of Culture and Science	€6.6
	[Sunday] Capuchin Crypt in Brno	€5
	[Thursday] Schloss Sanssouci (including tickets)+Bridge of Spies+Transfer	€35
	[Saturday] Wieliczka Salt Mine + guided tour	€50
	[Sunday] Auschwitz Concentration Camp 1 - guided tour, skip the line +(Chinese and English official guide)	€50
Group Activity (Must join)	[Thursday] Pomnik Chrystusa Krola	€10
Compulsory City Tax (pay with tour fee)	[Wednesday] Berlin City Entrance Tax+ Overnight City Tax	€10
	[Friday] Warsaw City Entrance Tax+ Overnight City Tax	€10
Optional Local Dinner	[Saturday] Polish Dinner 3 course	€35







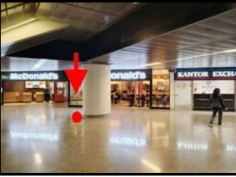
Optional Activities Consumption • Key Guidelines

In order to protect your rights and interests, please read the **[Articles and Rules]** carefully before registering for the tour(s). By registering, you are agreeing and have understood the terms and conditions.

1. Ticket prices and optional paid activities listed are for reference only. The actual prices and arrangements are subject to the attractions' official websites and the schedule on the day. Attractions and optional items may be adjusted due to weather, number of participants, and opening hours.
2. Any discount card, student card, or senior card is not applicable to our company's itinerary, scenic spot tickets or self-paid activities.
3. Please bring cash in Euro! Please prepare enough Euro in cash before departure in order to be able to pay for tickets, self-paid programs, group activities and tips.
4. If the tour members pay using other currencies, there is a charge of 3% handling fee over the amount payable, which will be calculated on the real-time exchange rate of **【XE Currency Converter】**.
5. XE Currency Converter [Instant Exchange Rate] <https://www.xe.com/zh-HK/currencyconverter/>
6. Note: The tour guide may not have enough euros to exchange with the tour members.

SILVER LINE 「Heritage Trail」 • JOINING POINTS

Customers can choose to start their tour at any of the joining points along the tour route as listed below.
Please arrive at the meeting point at least 15 minutes early. The tour will depart on time, and no refunds will be issued for late arrivals. Please wait at the designated location, as the tour guide will personally come to lead you to the bus. Do not attempt to search for the bus on your own.

Y	CIT	E	TIM	PLACE & ADDRESS	
	 Czech Republic Prague		Tuesday 08:30	Prague Central Station (Praha HlavníNádraží) Meeting point: Station terminal hall Burger King Restaurant Address: Wilsonova 8, Prague 2, Czech Republic Note: After meet-up, we will not visit Prague. The coach drives directly to Karlovy Vary	
	 Germany Berlin		Wednesday 13:00	Berlin TV Tower Meeting point: Main Entrance Address: Panoramastraße 1A, 10178 Berlin Note: After meet-up, we will visit Berlin	
			Thursday 08:30	Potsdamer Platz Meeting point: Main Entrance Address: Potsdamer Platz, 10785 Berlin Note: After meet-up, we will not visit Berlin. The coach drives directly to Potsdam	
	 Poland Warsaw		Saturday 08:30	Warsaw Chopin Airport Meeting point: Arrival Hall McDonald's Restaurant Address: strefa operacyjna lotniska, Żwirki i Wigury 1, 00-906 Warszawa Note: After meet-up, we will not visit Warsaw. The coach drives directly to Cracow	

SILVER LINE 「Heritage Trail」 • DROP OFF POINTS


Please note that the drop off time is for reference only and may vary slightly due to traffic/unforeseen circumstances.

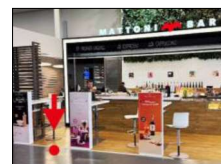
DAY	CITY	TIME	LOCATION
Tuesday	Dresden	20:00	Group hotel near Dresden
Wednesday	Berlin Berlin	11:30 19:00	Berlin TV Tower Brandenburg Gate
Friday	Warsaw	19:00	The Palace of Culture and Science
Saturday	Cracow	19:30	Main Square of old town
Sunday	Brno	20:00	Brno Main Train Station
Monday	Cesky Krumlov	14:15	Cesky krumlov bus parking lot
Monday	Prague	19:15	Prague Central Station

SILVER LINE 「Heritage Trail」

Pre/Post Hotel FREE AIRPORT TRANSFER SCHEDULE

The free airport transfer service is only available in the following cities and for guests who have booked pre- or post-tour hotels. Guests must reserve this service at least 7 days before departure. Guests without a reservation cannot use this service. Please wait for the driver at the designated time and location. Late arrivals will not be accommodated.

City	Airport Transfer Time	Airport Transfer Points
 Czech Republic Prague (PRG)	Pickup Times Mondays* <ul style="list-style-type: none"> • 12:00 • 18:00 *(Join Tour on Tue)	Airport Pickup Point: Václav Havel Airport Prague Waiting Point: Terminal 1, Arrivals Hall, Restaurant Mattoni Bar.
	Drop-off Times Tuesdays* <ul style="list-style-type: none"> • 07:00 • 13:00 *(Get off Tour on Mon)	Airport Drop-off Location: goEUgo post-hotel Waiting Point: Hotel lobby



TRAVELERS HUB TOURS SDN BHD

(896493-M) TDC No - KPL/LN: 6250

2-3-3A, Kompleks Kantonmen Prima,
 No: 698, Batu 4 Jalan Ipoh, 51200 Kuala Lumpur, Malaysia.
 Tel: +6016-3919333 | +603-27326615 | Fax: +603-27326619
 Web: www.travelershub.com.my
 Email: web@travelershub.com.my